



WELCOME TO
STOCKSBRIDGE

Regenerating and connecting the heart of our town

www.welcometostocksbridge.co.uk

Delivering A New Future 4 Our Town



HM Government



WELCOME TO
STOCKSBRIDGE

Investing in health, leisure and wellbeing

www.welcometostocksbridge.co.uk

Delivering A New Future 4 Our Town



HM Government



WELCOME TO
STOCKSBRIDGE

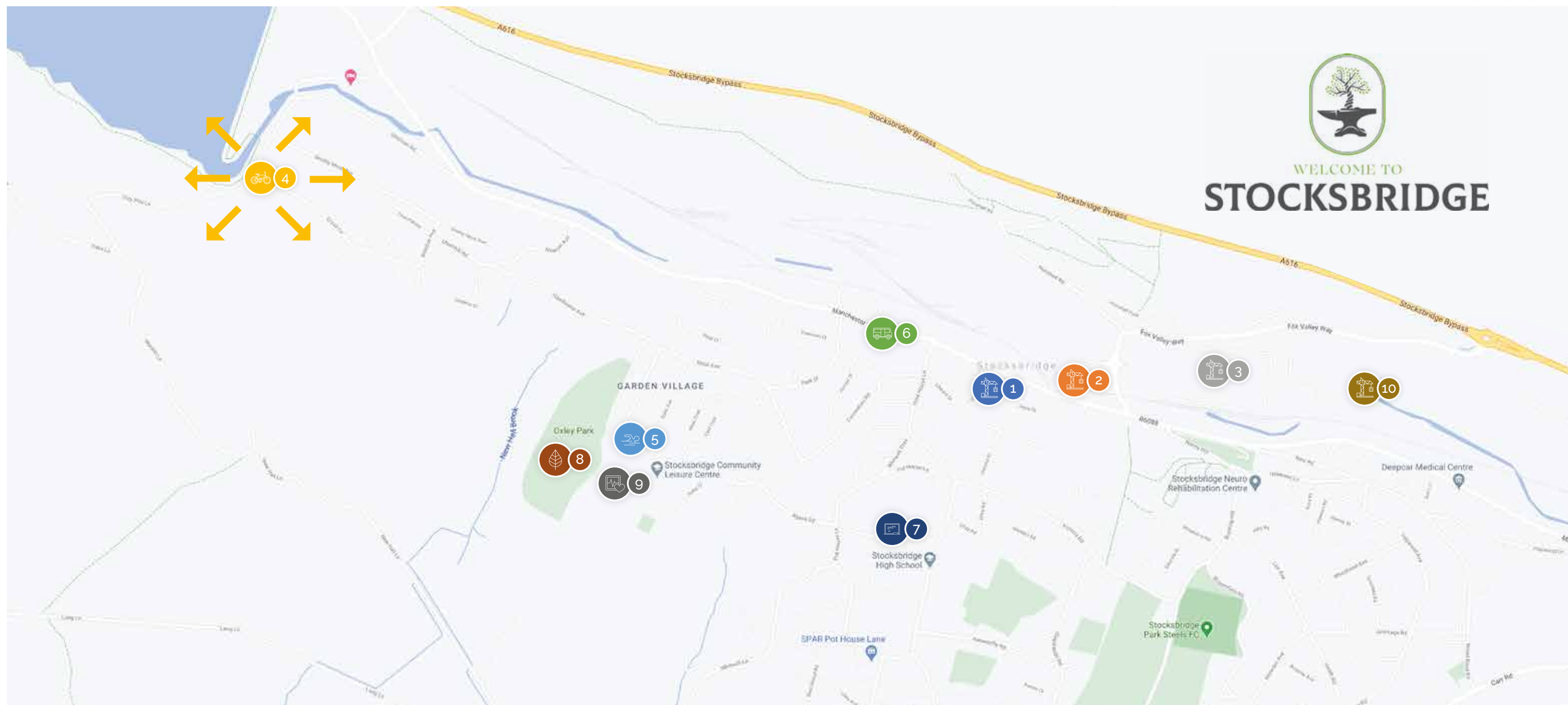
Skills and education for the future











www.welcometostocksbridge.co.uk

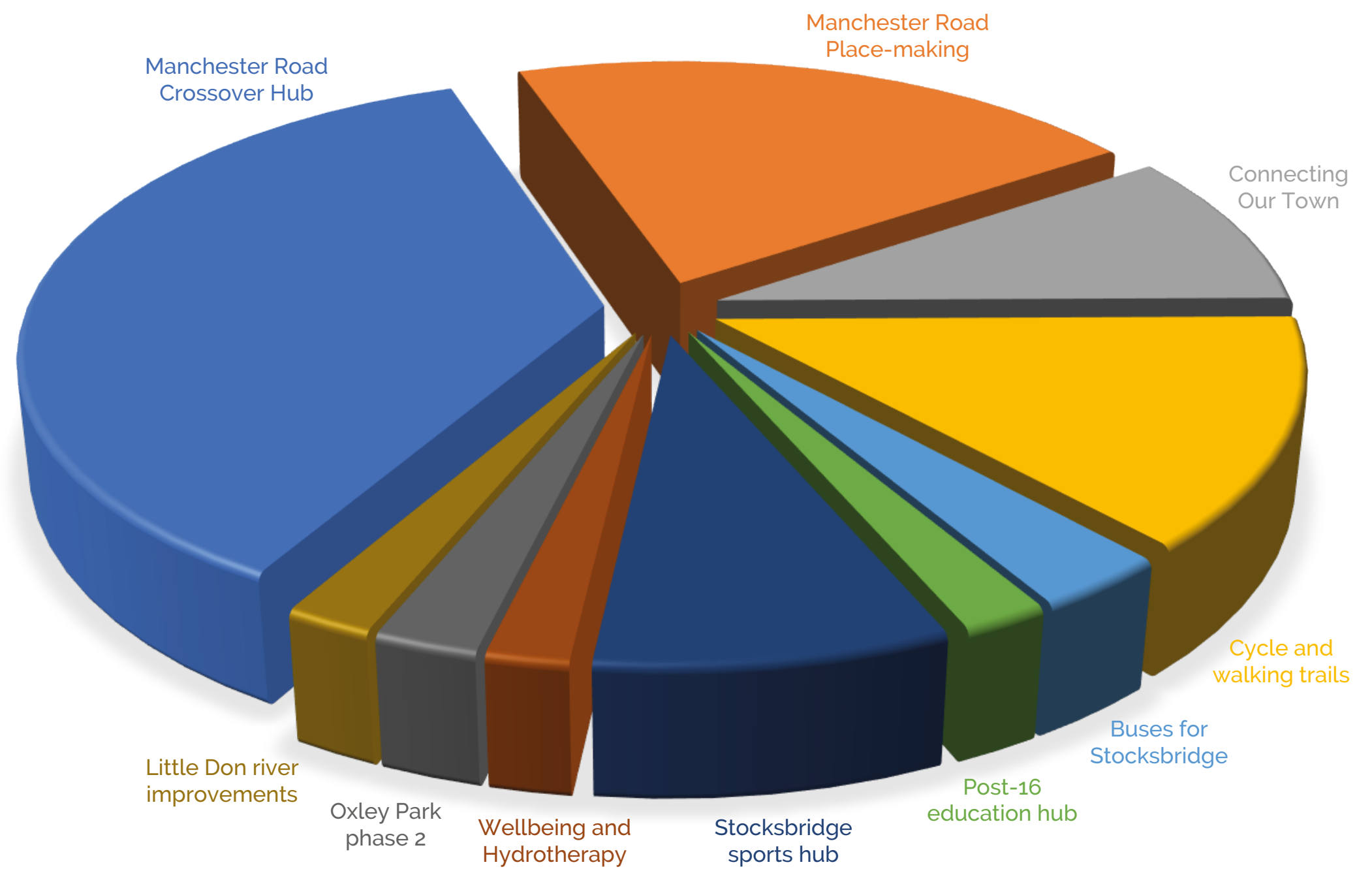
Delivering A New Future 4 Our Town



HM Government



- | | |
|--|--|
|  <p>Manchester Road Crossover Hub</p> |  <p>Manchester Road Place-making</p> |
|  <p>Connecting Our Town</p> |  <p>Cycling and Walking Trails</p> |
|  <p>Stocksbridge Sports Hub</p> |  <p>Buses for Stocksbridge</p> |
|  <p>Post-16 education hub</p> |  <p>Oxley Park Phase 2</p> |
|  <p>Wellbeing and Hydrotherapy</p> |  <p>Little Don River improvements</p> |



Manchester Road Community Crossover Hub

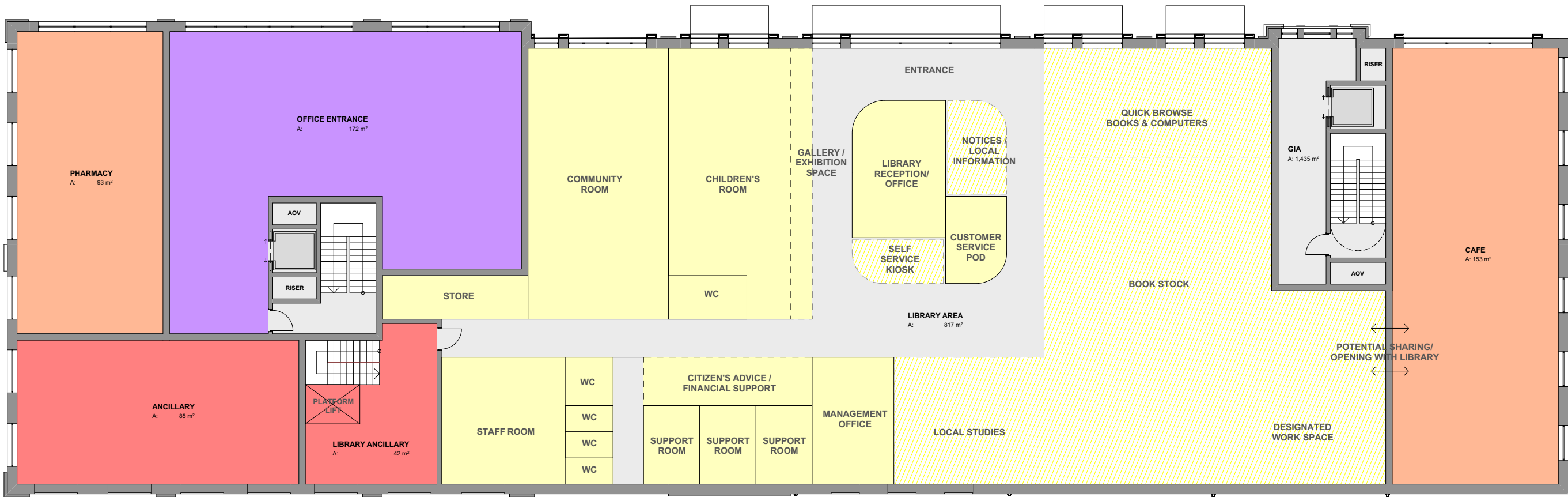
Existing Manchester Road library site
and artist's impression of proposed
Crossover Hub



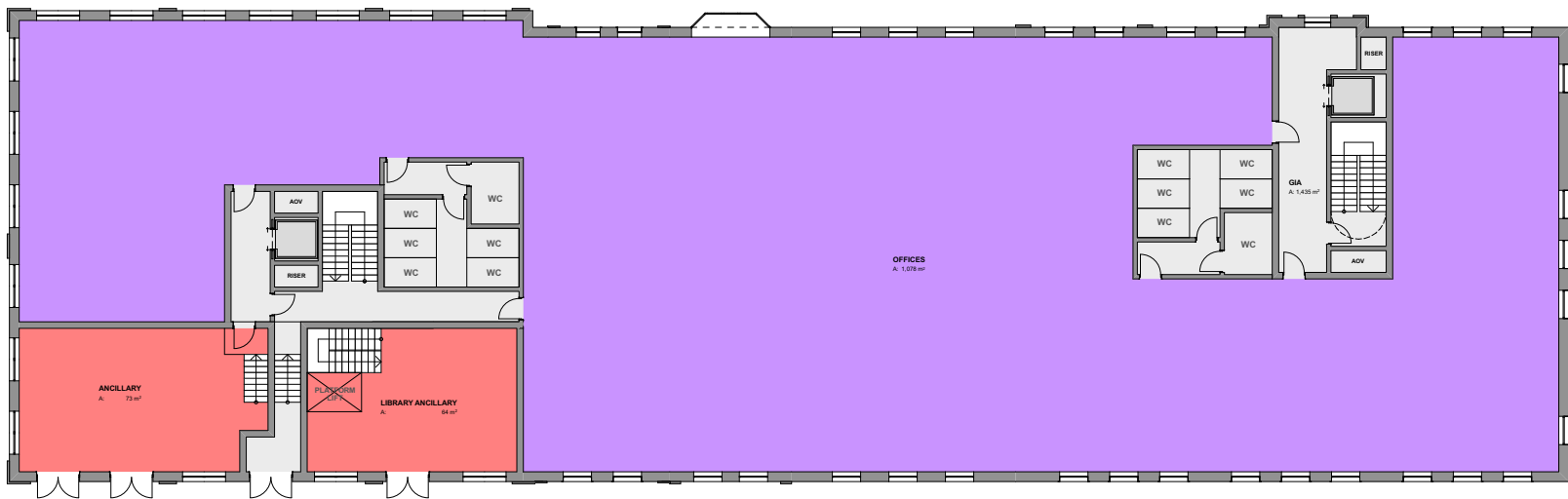
Manchester Road Community Crossover Hub

As the first phase of a transformation of our traditional high street the hub will create space for entrepreneurs to start and grow the businesses of tomorrow as well as a brand-new modern library and other local facilities.

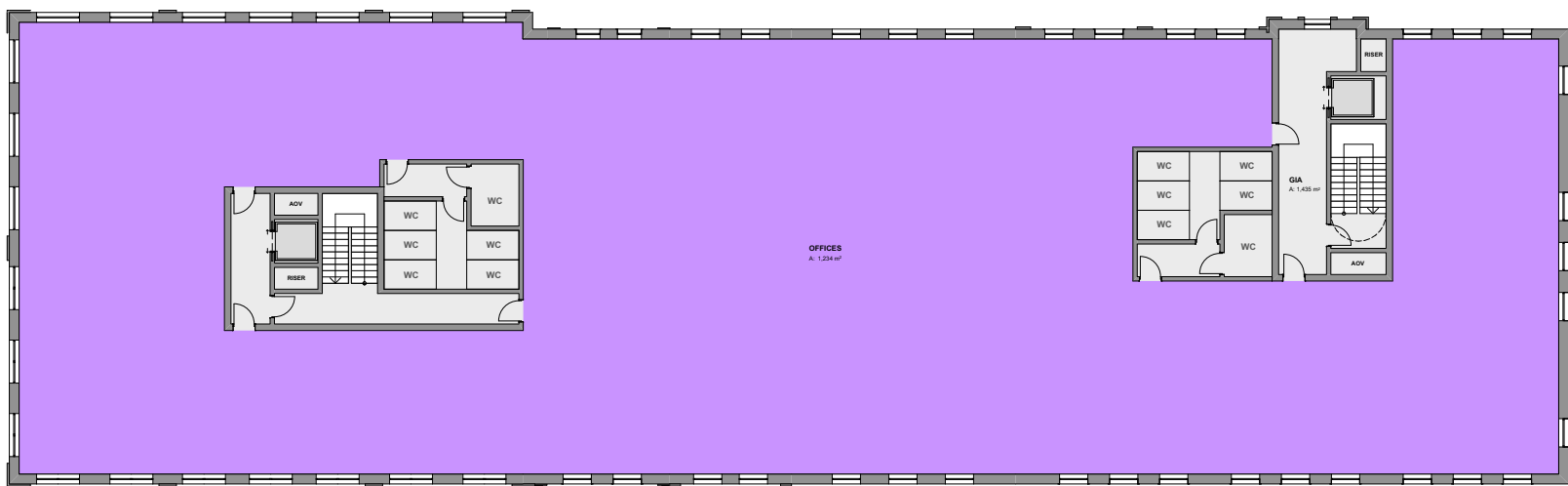
Proposed Block A ground floor



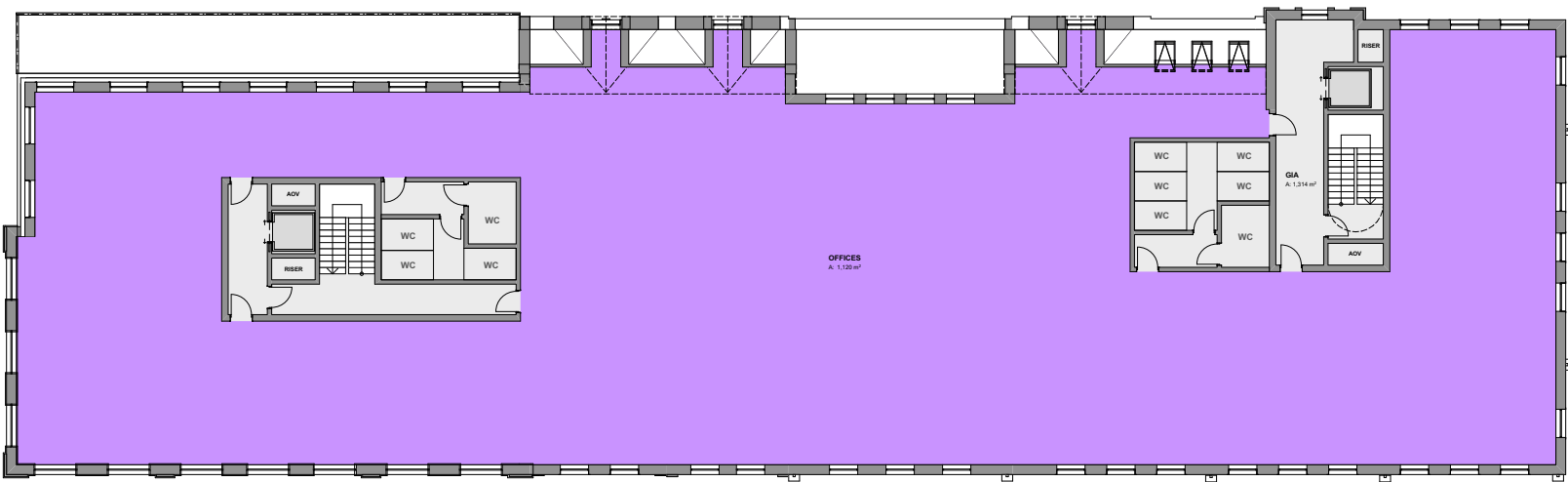
Proposed Block A first floor



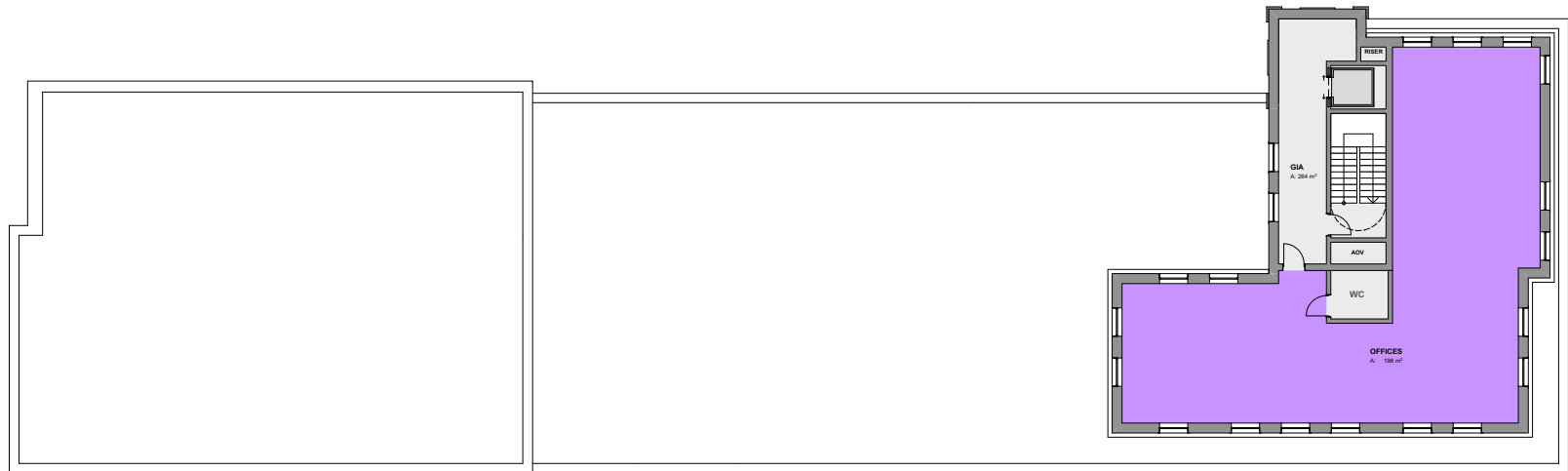
Proposed Block A second floor



Proposed Block A third floor



Proposed Block A fourth floor



Manchester Road Community Crossover Hub

Further artist's impressions looking from the precinct.

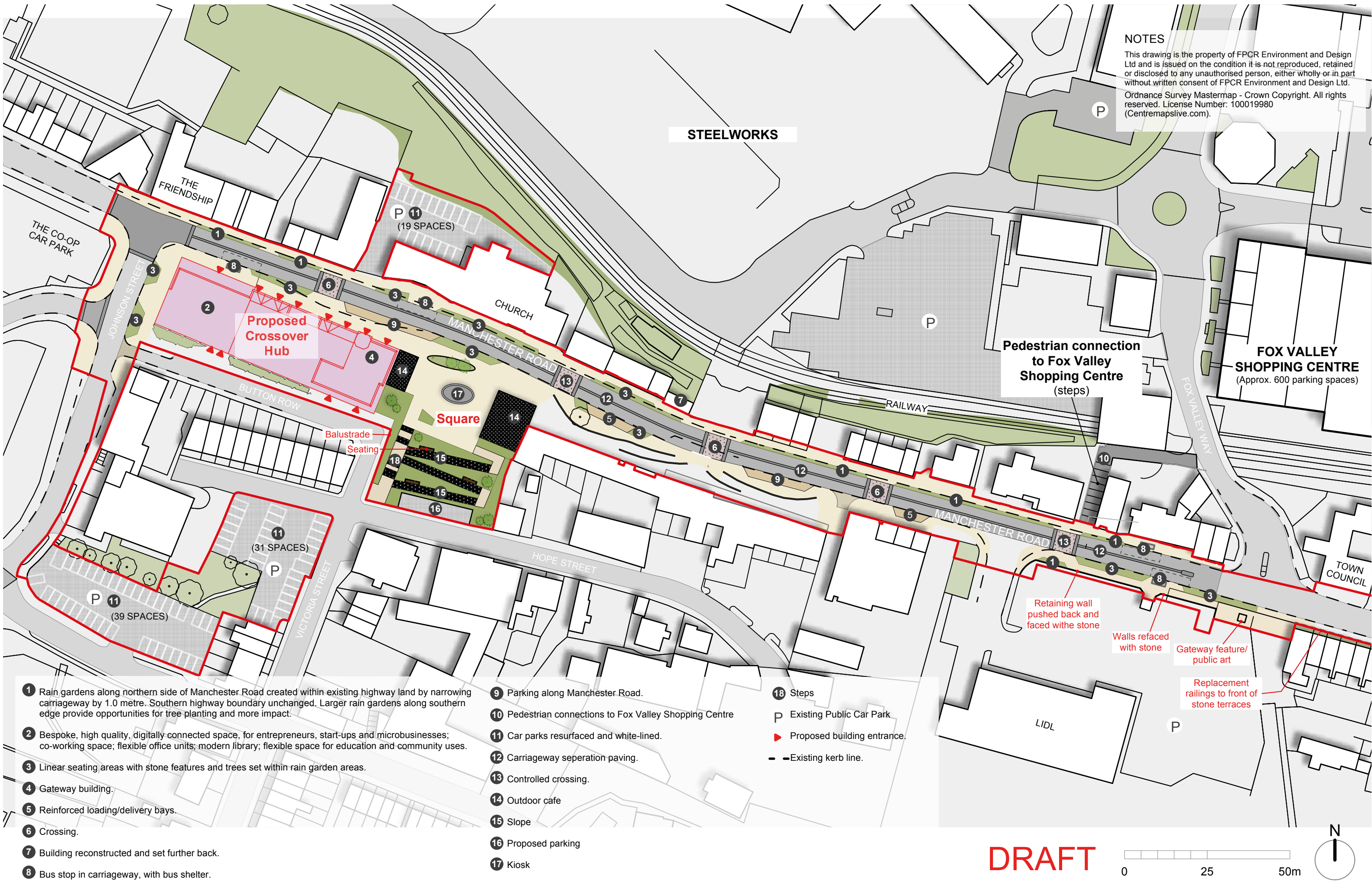


Town Centre Placemaking



Precedent: Furnival Gate, Sheffield.
Focal steps, ramp and seating with stone features and planting.

Precedent: Grey to Green, Sheffield City
Rain gardens and feature painting with new surfacing, stone features and seating.



Dransfield Properties Ltd
Towns Fund
Stocksbridge, South Yorkshire

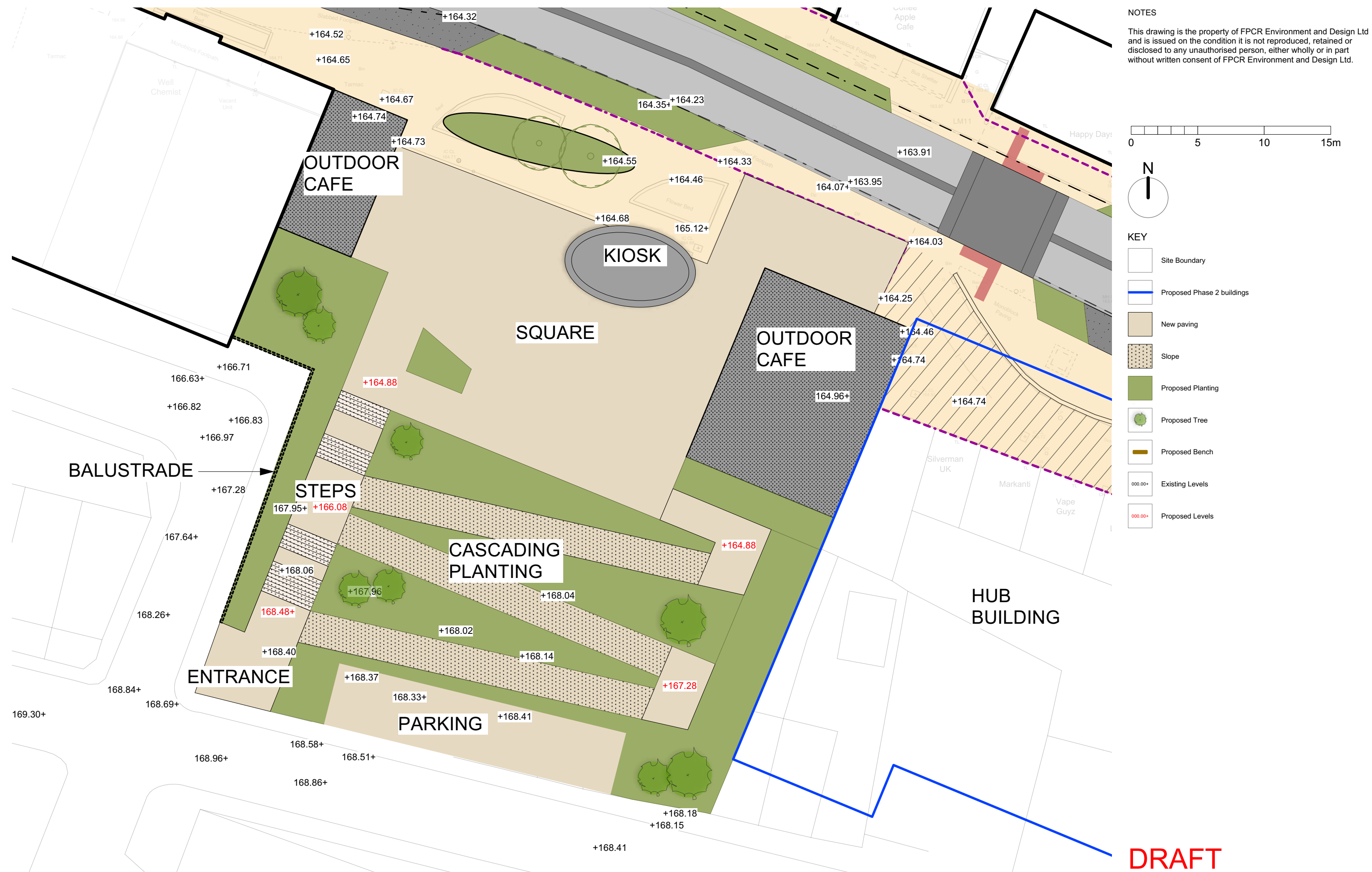
ILLUSTRATIVE MASTERPLAN
(To be refined through community and stakeholder consultation)

1:1000 @ A3
4th October 2021 PM / DH
9369-L-11 rev **V**

fpcr
FPCR Environment and Design Ltd
London Road
Leeds LS1 2JL
0113 272722
0113 272723
info@fpcr.co.uk
www.fpcr.co.uk

Town Centre Placemaking

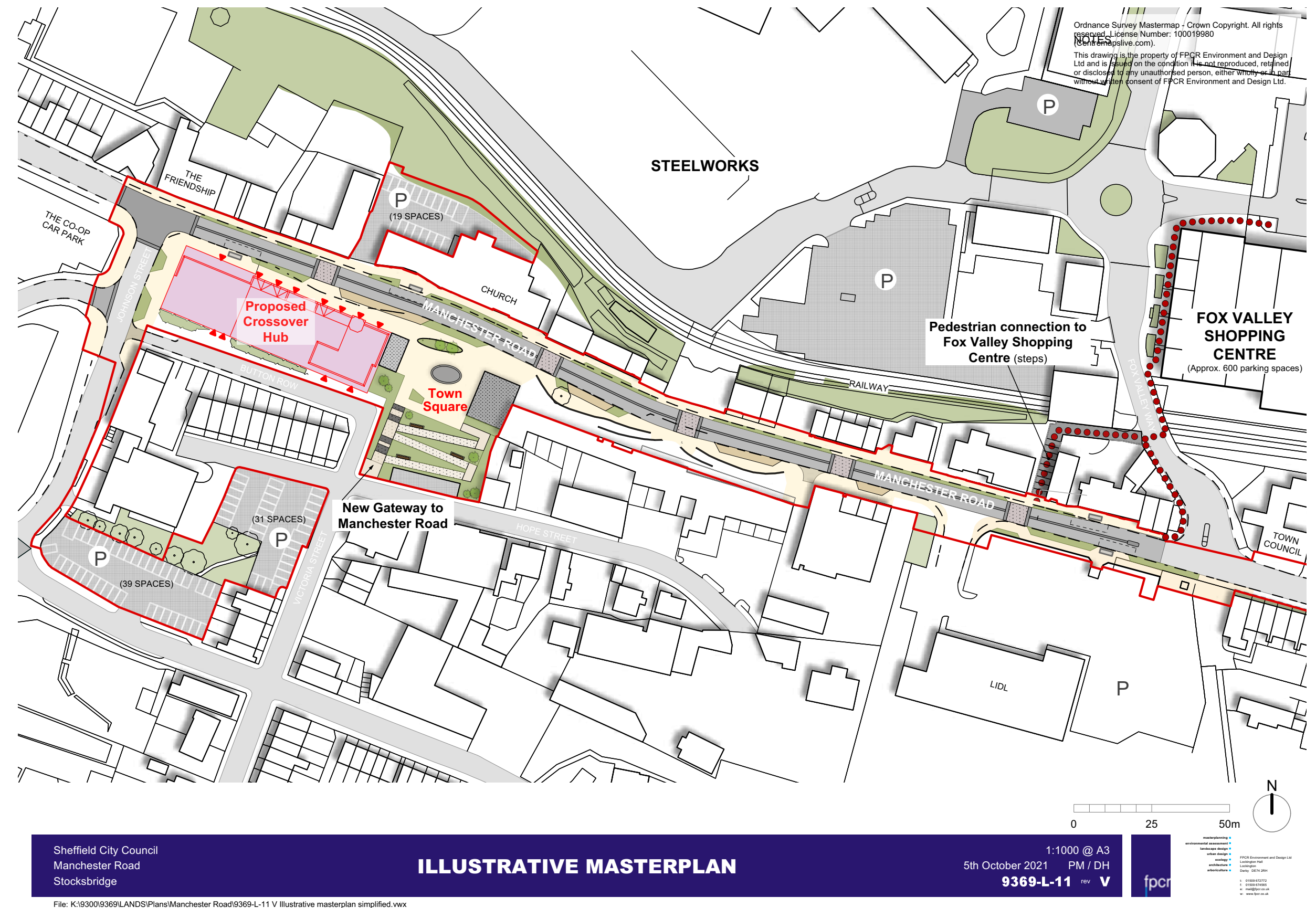
A new Town Square and focal point for the Manchester Road area linking to the wider town, with high quality landscaping.



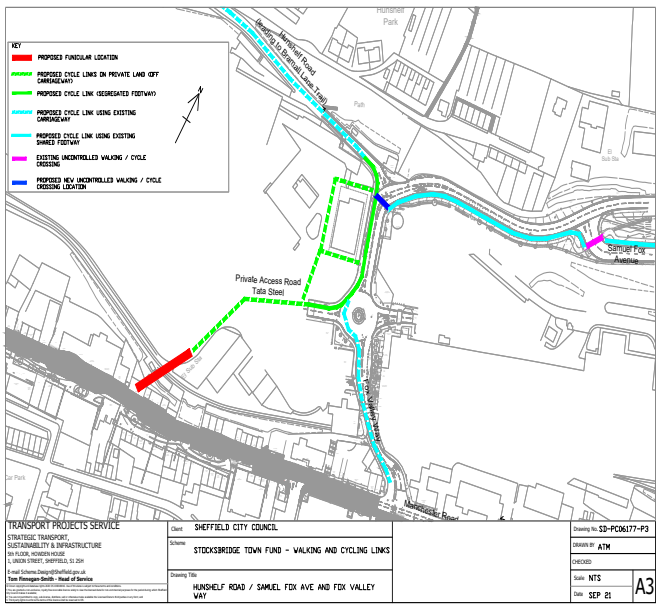
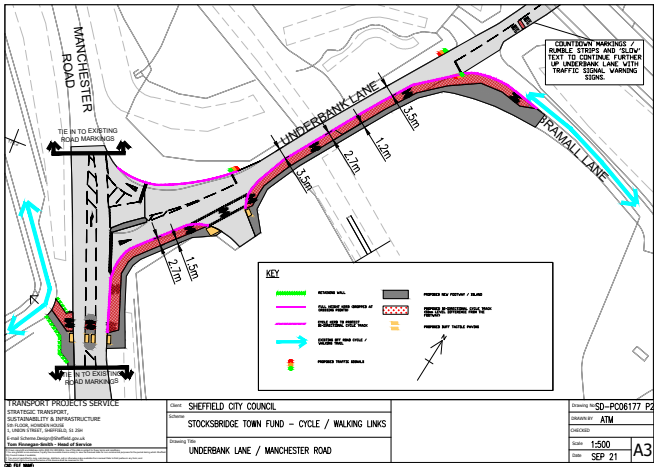
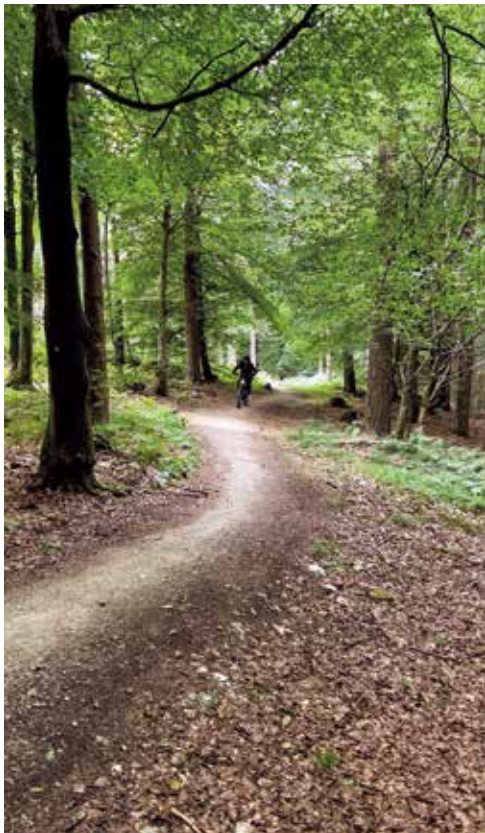
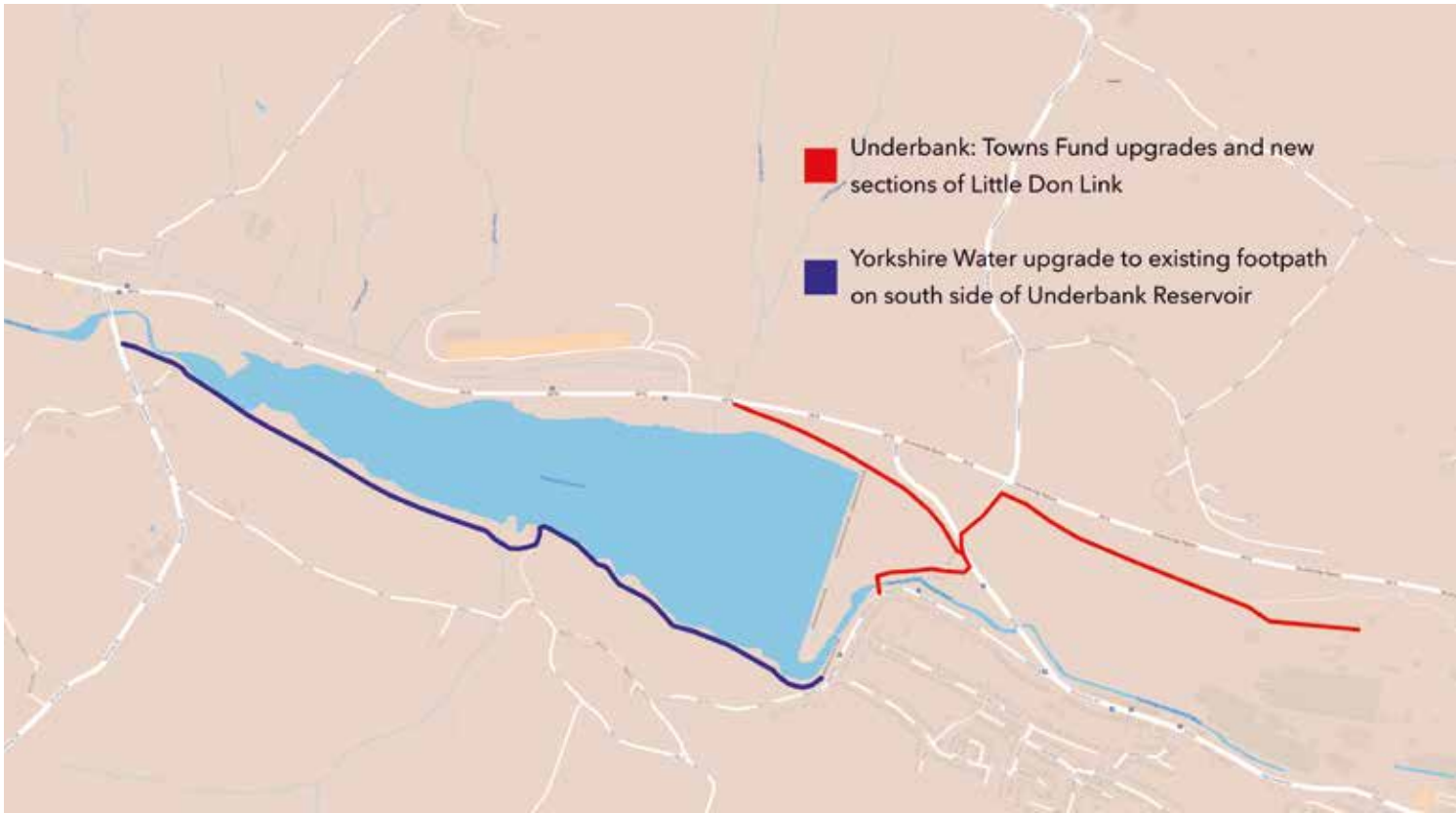
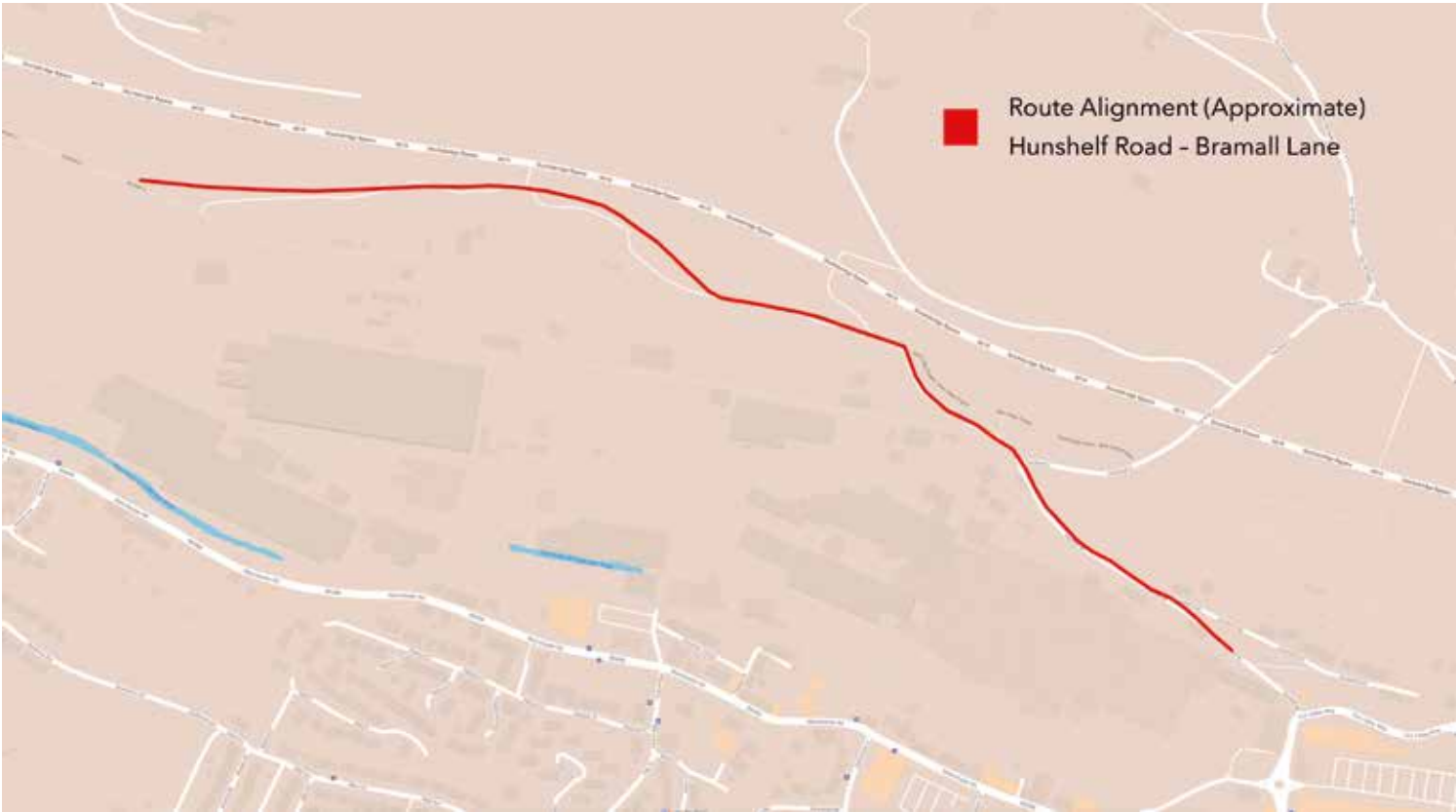
Connecting the town

This project aims to create better links between the different parts of the town created a well-connected more cohesive central area including:

- Better pedestrian links between Fox Valley and the Manchester Road area encouraging more linked trips
- Improved car and cycle parking provision and clear links through to the new crossover hub
- Continuity of signposting for car parking and key facilities across the town centre



Cycling and walking trails



Stocksbridge Sports Hub

A range of improvements to sporting and leisure facilities in the town including a new multi use all weather pitch in Oxley Park as well as a new multi use sports hub at Stocksbridge Cricket Club.

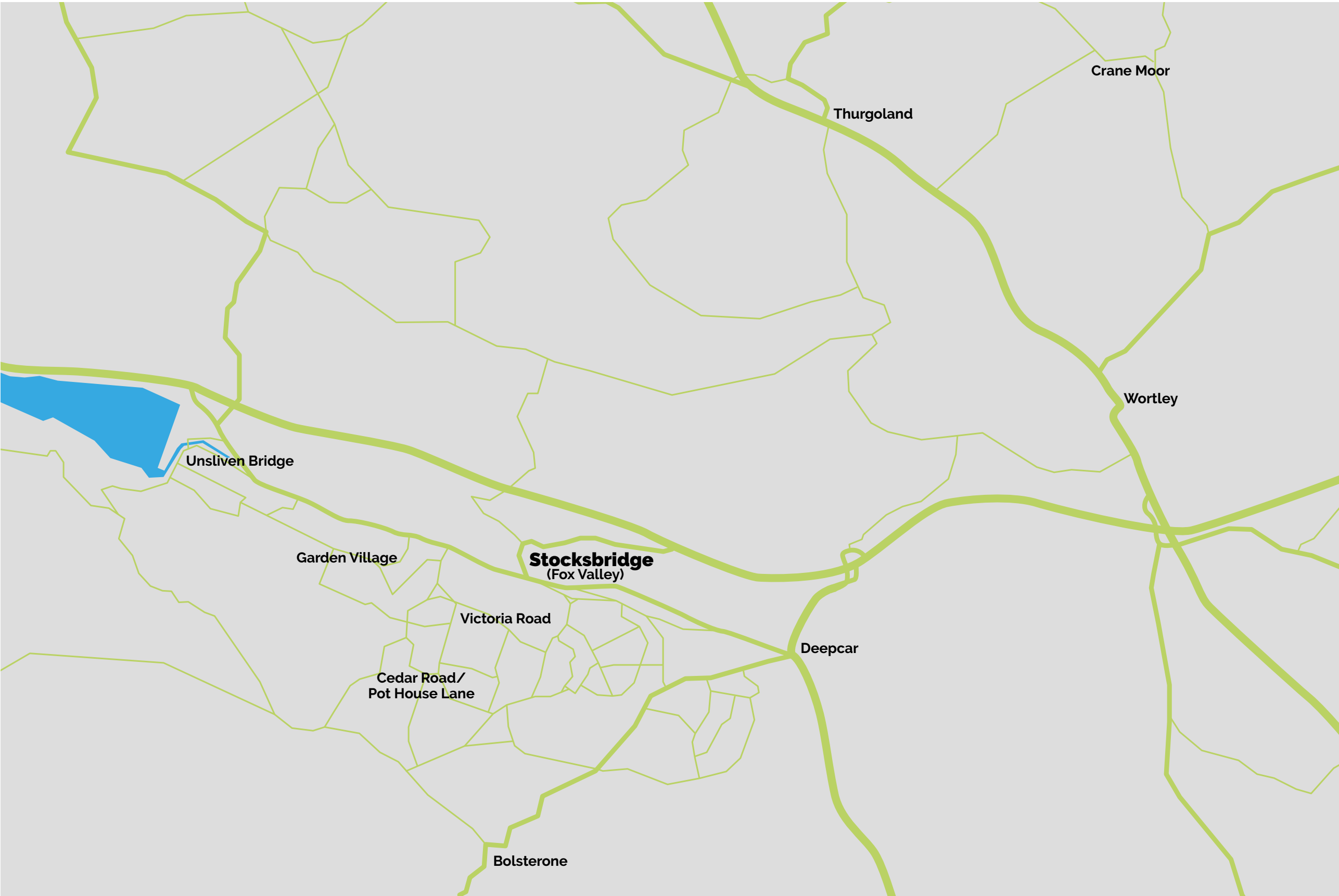


Buses for Stocksbridge

Transforming local connectivity, investing in new bus services connecting the outlying areas and core residential areas within Stocksbridge and Deepcar with key destinations in the town. Also ensuring that potential for passenger services on the Don Valley Railway are taken forward through the Restoring Your Railway Fund.

Proposed New Services

- Stocksbridge (Fox Valley) - Deepcar Circular
- Stocksbridge (Fox Valley) - Victoria Road - Deepcar - Bolsterstone
- Stocksbridge (Fox Valley) - Cedar Road/Pot House Lane Circular
- Stocksbridge (Fox Valley) - Garden Village/Unsliven Bridge Circular
- Stocksbridge (Fox Valley) - Thurgoland - Crane Moor - Wortley Circular



Post-16 Education Hub

This project will transform part of the existing estate at Stocksbridge High School to bring post-16 education to the town, alongside potential for adult learning. Working with partners in the Minerva Learning Trust to help raise aspirations amongst young people and parents.



Minerva
Learning Trust

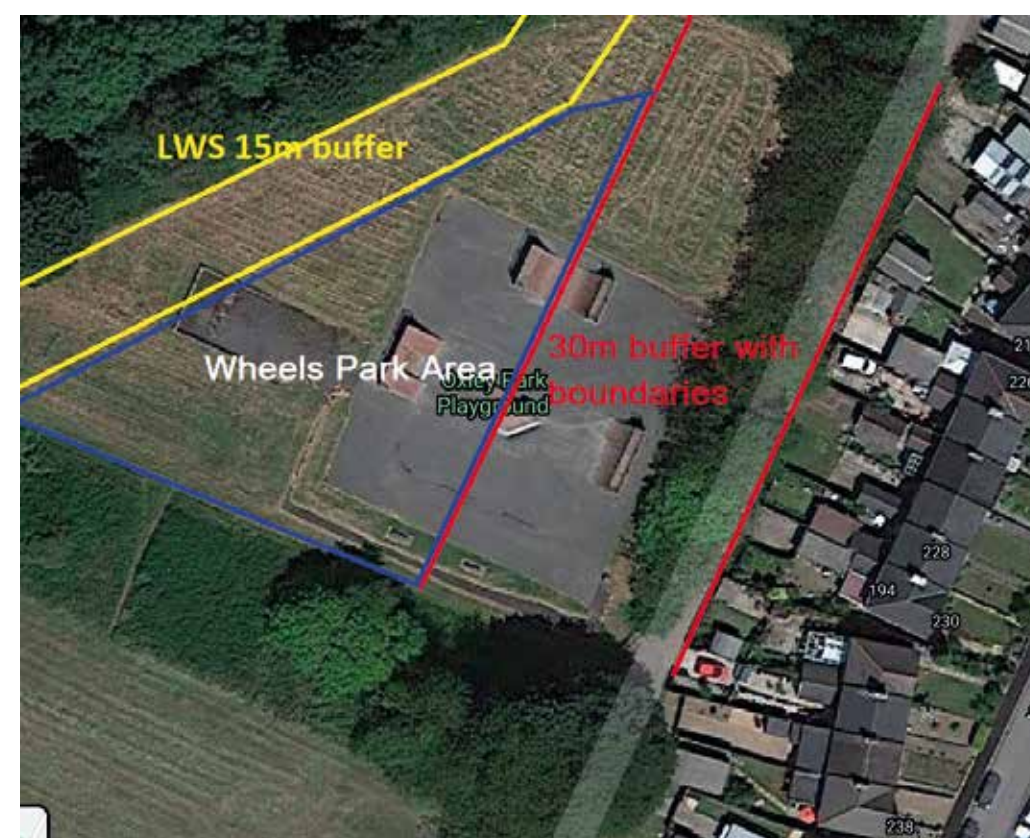


STOCKSBRIDGE
HIGH SCHOOL
— This is Just the Start —



Oxley Park Phase 2

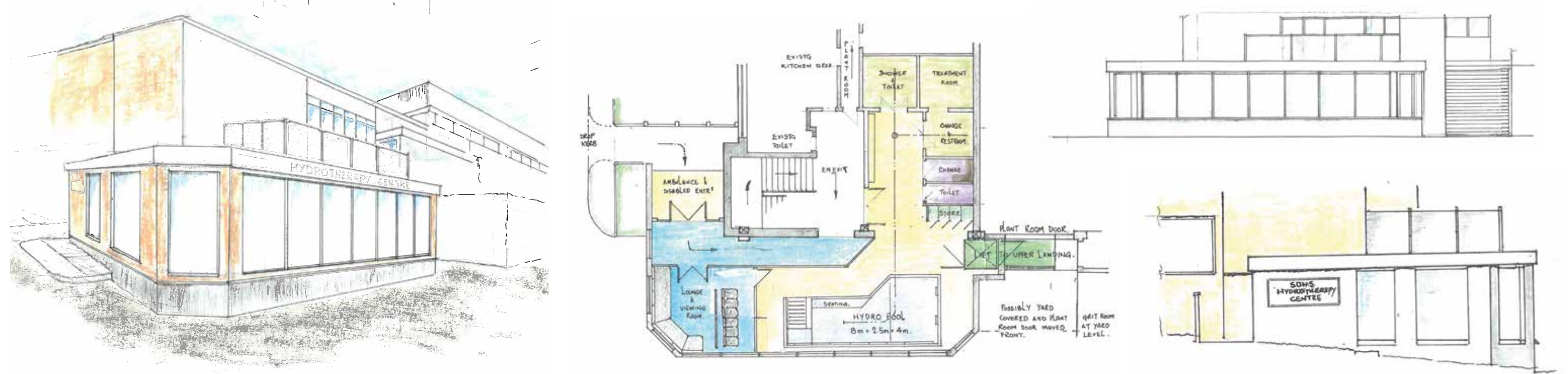
Replacing and upgrading the current facility with a new and modern all wheels park with a 30m buffer from local properties. Footpaths also to be upgraded in the area.



Wellbeing approach and hydrotherapy centre

Investment in a facility to improve physical and mental wellbeing, building on the existing facilities at Stocksbridge Leisure Centre.

Impression of the SCLC proposed hydrotherapy centre



Little Don River improvements

Creating a resilient, biodiverse river with enhanced opportunities for residents and visitors to experience the river, its plants and animals, and its role in the area's industrial heritage.

