

Site Plan

Formal entranceway off Hawthorne Avenue with tarmac surfacing and reposition of signage.

New all wheels facilities set within re-profiled landscape, including extensive wildflower planting, earthworks and widespread tree planting, for improved visual amenity & screening from adjacent houses.

Central steps to lower terrace for improved access to facilities

Proposed new 'all wheels' park, designed and built by Canvas Spaces Ltd, specialist design & build contractors.

New pathways provided to new facilities and improved links to adjacent woodland.

Existing playground provided as part of initial improvements to the park.

4 new electric car charging points

Landscape improvement works to Leisure Centre's cafe area, including new pathworks, wildflower & tree-planting.

Existing woodland footpath to be resurfaced and improved throughout with drainage works where required.



Planting schedule					
Species	Girth/diameter cm	Height	Root Zone	Specification	Number
Betula ermanii 'Holland' (BeH)	10-12	2.5-3.0m	B/RB	Select Standard	1
	14-16	4.0-6m	B/RB	Extra Heavy Standard	2
Betula pendula (BP)	12-14	3.5-4.5m	B/RB	Heavy Standard	2
	14-16	4.0-6m	B/RB	Extra Heavy Standard	2
Betula utilis (BU)	6-8	2.0-2.5m	B/RB	Light standard	1
	10-12	2.5-3.0m	B/RB	Select Standard	1
	14-16	4.0-6m	B/RB	Extra Heavy Standard	1
TOTAL					10

KEY

Full-depth asphalt construction as MTC-HLM-00-ZZ-DR-L-3001. Works to include new PCC edgings

Areas to be topsoiled (150mm) Pr_45_31_89_41 and seeded as Ss_45_35_45_35

Perennial wildflower planting as MTC-HLM-00-ZZ-DR-L-4518

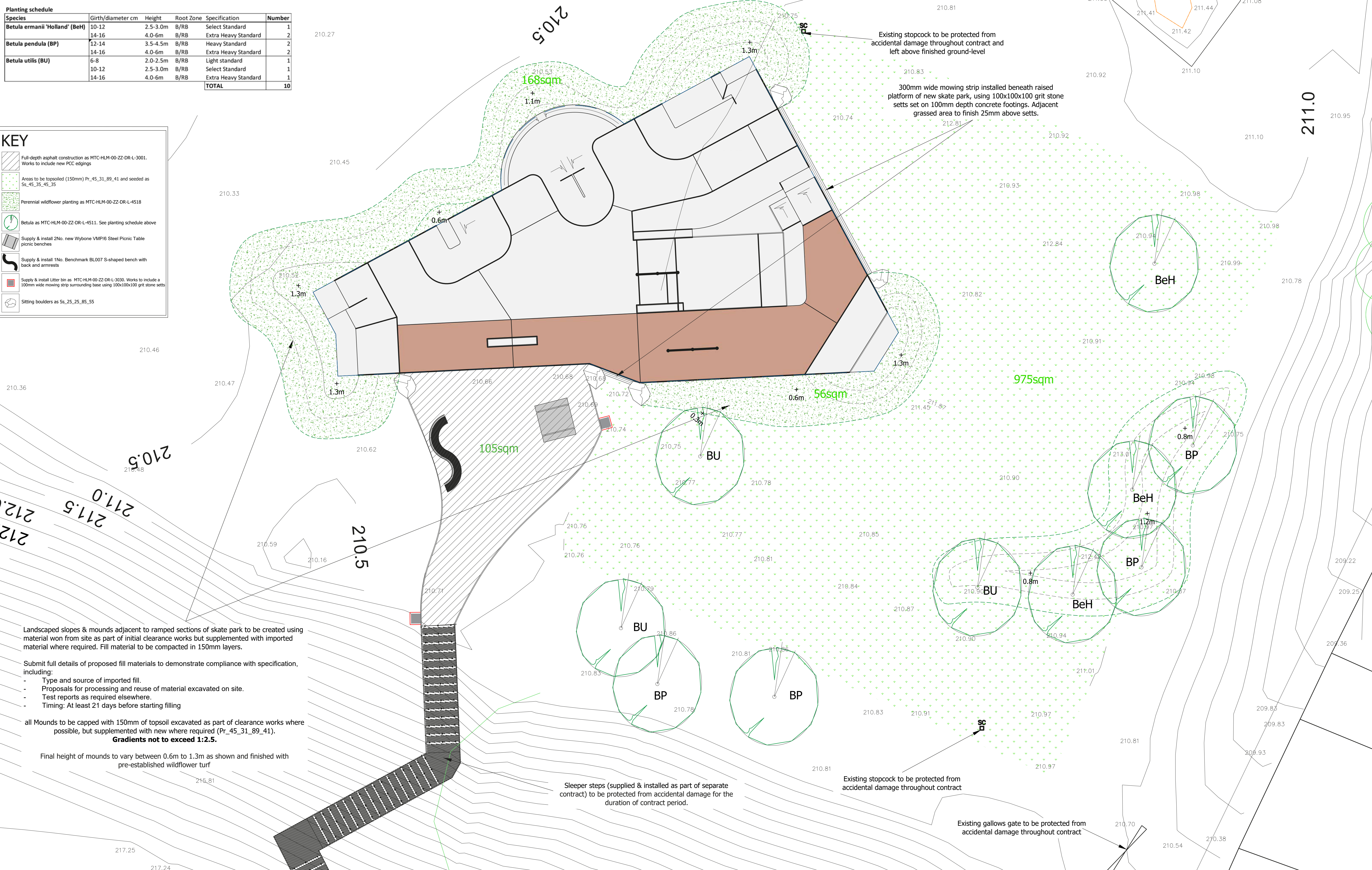
Betula as MTC-HLM-00-ZZ-DR-L-4511. See planting schedule above

Supply & install 2No. new Wybone VMP/6 Steel Picnic Table picnic benches

Supply & install 1No. Benchmark BL007 S-shaped bench with back and armrests

Supply & install Litter bin as MTC-HLM-00-ZZ-DR-L-3030. Works to include a 100mm wide mowing strip surrounding base using 100x100x100 grit stone setts

Sitting boulders as Ss_25_25_85_55



Landscaped slopes & mounds adjacent to ramped sections of skate park to be created using material won from site as part of initial clearance works but supplemented with imported material where required. Fill material to be compacted in 150mm layers.

Submit full details of proposed fill materials to demonstrate compliance with specification, including:

- Type and source of imported fill.
- Proposals for processing and reuse of material excavated on site.
- Test reports as required elsewhere.
- Timing: At least 21 days before starting filling

all Mounds to be capped with 150mm of topsoil excavated as part of clearance works where possible, but supplemented with new where required (Pr_45_31_89_41).
Gradients not to exceed 1:2.5.

Final height of mounds to vary between 0.6m to 1.3m as shown and finished with pre-established wildflower turf

Sleeper steps (supplied & installed as part of separate contract) to be protected from accidental damage for the duration of contract period.

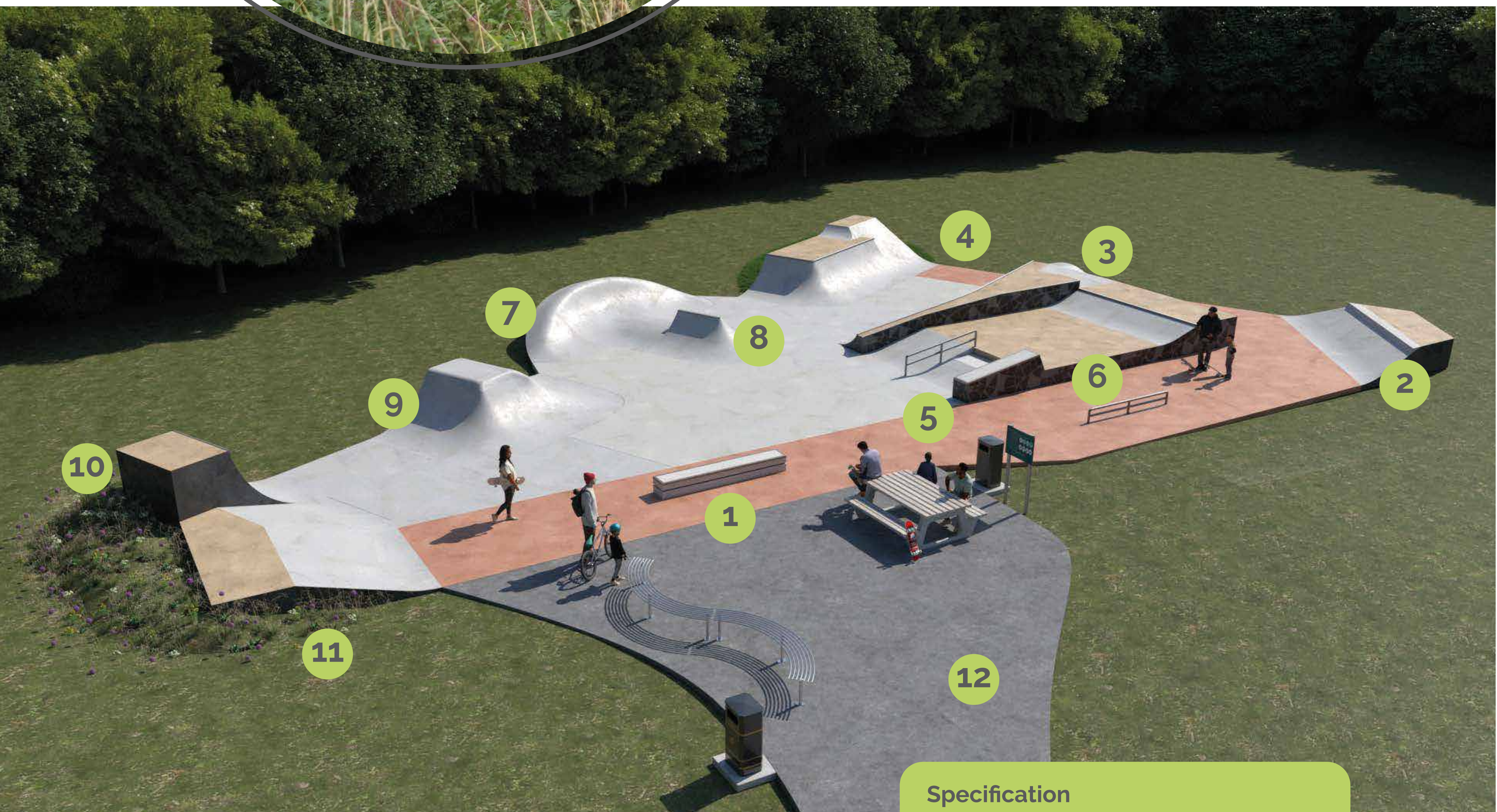
Existing stopcock to be protected from accidental damage throughout contract

Existing gallows gate to be protected from accidental damage throughout contract



Skate Park / New All Wheels Park

1.Street area **2.**Bank to Ledge
3.Mini-Jump Box **4.**Mini Ramp
5.Hubbas and Handrail **6.**Mini-Bank to
Ledge **7.**Blended Berm **8.**Spine
9.Jump Box **10.**Large Quarter-pipe
11.Flat Bank Hip **12.**Entrance area with
footpath, and seating.



Specification

- Float finish, reinforced concrete
- Galvanised steel coping and edging
- Integrally coloured concrete

